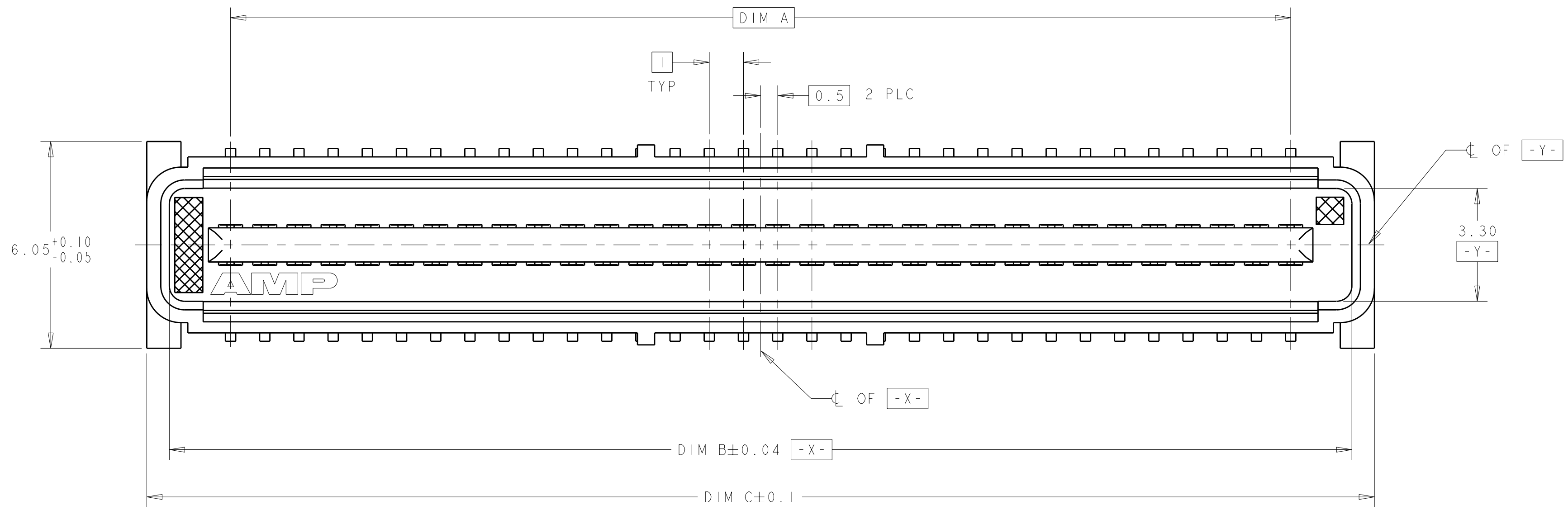
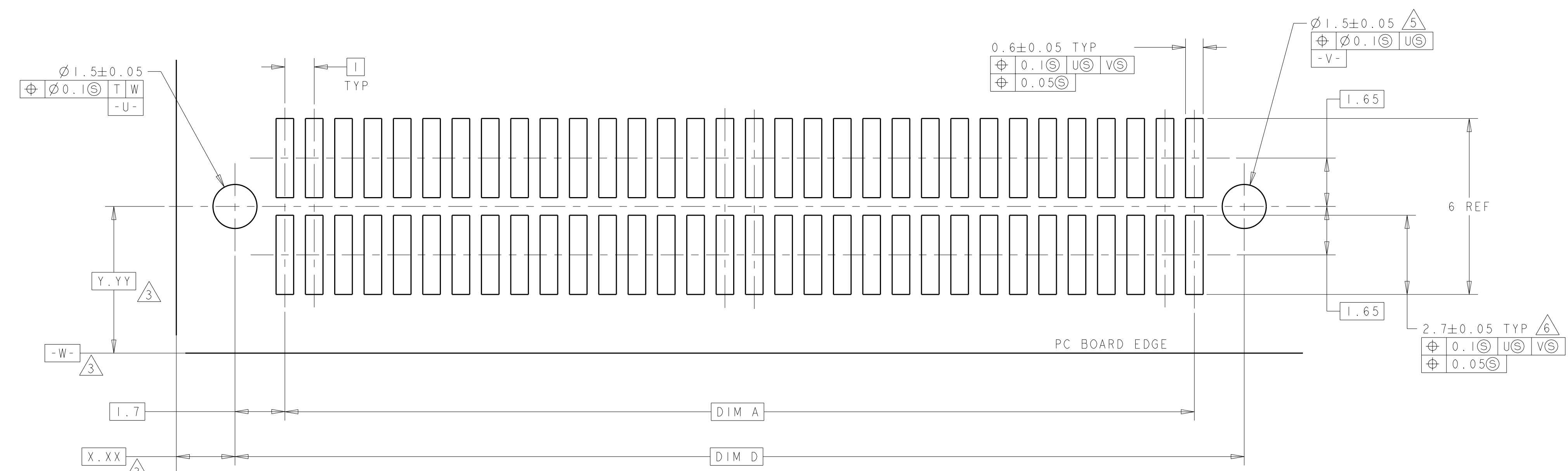
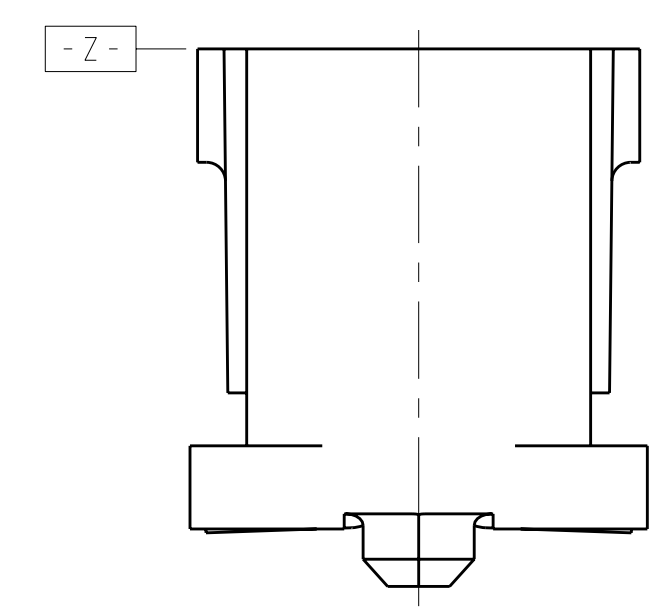
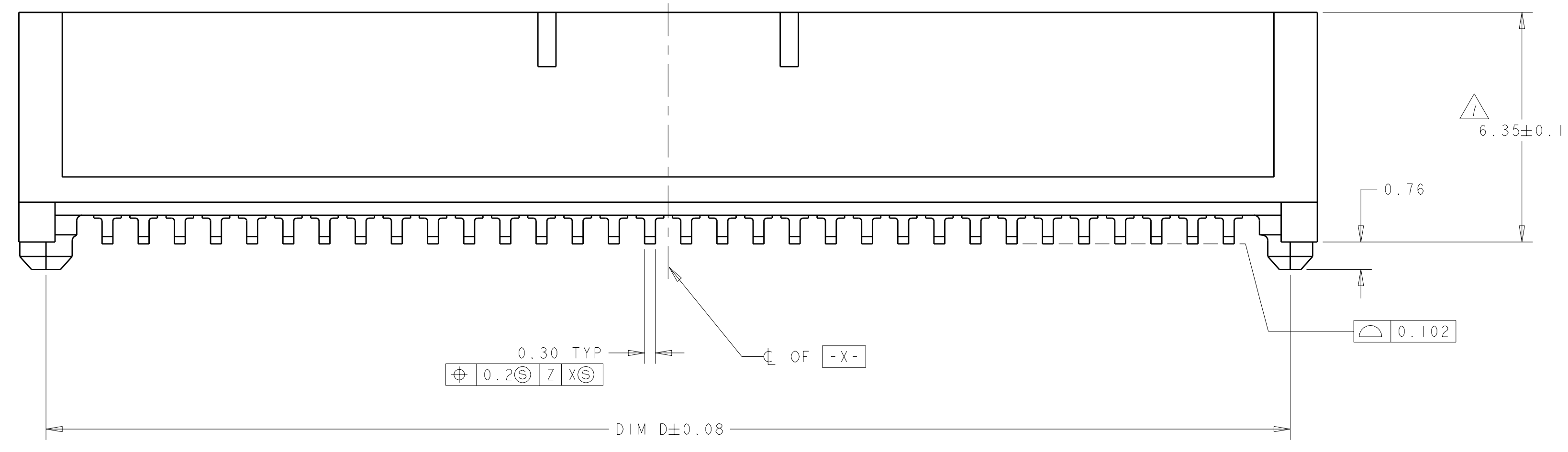


REVISONS		DATE	DWN	APVD
0	REV PER EC 0512-0235-04	30SEP2004	BC	RW
A	REV PER EC 0512-0213-05	16SEP2005	BC	RW
B	REVISED PER ECO-08-008615	10JUL2008	DH	DB



- 1 HOUSING MATERIAL: LIQUID CRYSTAL POLYMER. COLOR: BLACK. CONTACT MATERIAL: PHOSPHOR BRONZE.
- 2 CONTACT FINISH: NICKEL UNDERPLATE ALL OVER, MATING SURFACES PLATED TO MEET PLI PERFORMANCE REQUIREMENTS OF INDUSTRY SPECIFICATION EIA-700AAAB, SOLDER TAILS PLATED TIN.
- 3 DATUM LOCATIONS AND BASIC DIMENSIONS TO BE ESTABLISHED BY THE CUSTOMER. CONSULT AMP ENGINEERING WHEN PLACING MULTIPLE CONNECTORS ON A PC BOARD.
- 4 PACKAGED IN TAPE ON REELS PER EIA-481.
- 5 1.5±0.05 DIAMETER HOLE SHOULD BE USED IF PLACED ON PCB WITH VACUUM PLACEMENT EQUIPMENT.
- 6 SHORTER SOLDER LANDS MAY BE USED PER EIA 700AAAB, HOWEVER 2.7 LENGTH ASSURES OPTIMUM SOLDER FILLET REGARDLESS OF MANUFACTURER OF CONNECTOR.
- 7 REFERRED TO AS DIM N IN EIA 700AAAB SPECIFICATION.
- 8 CONTACT FINISH: 0.00381 MINIMUM MATTE TIN PER ASTM B 548 ON SOLDER AREA, 0.00127 MINIMUM GOLD PER ASTM B 488 ON MATING AREA, BOTH OVER 0.00127 MINIMUM NICKEL PER SAE-AMS-QQ-N-290 ON ENTIRE CONTACT.



RECOMMENDED PC BOARD LAYOUT

FINISH	DIM D	DIM C	DIM B	DIM A	MATING CONNECTOR	STACK HGTS	POS	PART NO
8	44.4	45.9	44.58	41	5120521-2	8	84	1-5120525-2
2	44.4	45.9	34.58	31	5120521-1	8	64	1-5120525-1
2	34.4	35.9	34.58	31	5120521-1	8	84	5120525-2
2	34.4	35.9	34.58	31	5120521-1	8	64	5120525-1

DIMENSIONS: mm TOLERANCES UNLESS OTHERWISE SPECIFIED: 9 PLC ± 1 PLC ±0.03 2 PLC ±0.03 3 PLC ±0.003 4 PLC ± ANGLES ±0°30'		DWN B. CARBO 30SEP04 CHK R. WERTZ 30SEP04 APVD R. WERTZ 30SEP04		<b>tyco</b> Tyco Electronics Harrisburg, PA 17105-3608	
MATERIAL: SEE TABLE		PRODUCT SPEC: 502-1079 APPLICATION SPEC: 114-25045		NAME: PLUG ASSY, 1.0mm FH (IEEE1386) CONNECTOR SIZE: A1 CAGE CODE: 00779 DRAWING NO: C=5120525	
CUSTOMER DRAWING		WEIGHT:		SCALE: 10:1 SHEET: 1 OF 1 REV: B	